

Info box.

Opening times:
Kinderschneevalm:
daily from 9am to 3.45pm
Murmli Park:
daily from 9am to 4pm



For further information please contact:

Ski School Serfaus:
Tel. +43/5476/6268-0
Fax +43/5476/6268-15
www.skischule-serfaus.com
info@skischule-serfaus.com

Seilbahn Komperdell GmbH:
Tel. +43/5476/6203
info@skiserfaus.at

Serfaus-Fiss-Ladis Tourist Board:
Tel. +43/5476/6239
Fax +43/5476/6813
www.serfaus-fiss-ladis.at
info@serfaus-fiss-ladis.at
children's website www.murmli-bera.at

S1 Center (cable car bottom station):
Sun to Fri from 8am to 5pm (continuous)
Sat from 8am to 6pm (continuous)
Same opening hours during Christmas holidays and New Year's Day.

Ski school office on Komperdell (2000 m):
Sun to Fri from 9am to 4pm (continuous)
Sat from 9am to 2pm (continuous)
Same opening hours during Christmas holidays and New Year's Day.

Conditions of carriage for children.

Children between 1.10 m and 1.25 m in height may only use the chairlifts and ski tows if accompanied by an adult (such children should be carried on an adult's lap or use the other seat for chairlifts). Exception: Familienbahn Gampen chairlift (1 adult and 7 children from 1.10 m).

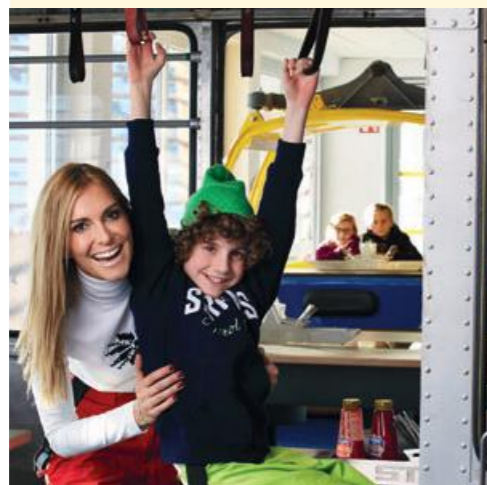
Children younger than 3 or smaller than 1.10 m may only use the cable cars and chairlifts if accompanied by an adult (such children should be carried on an adult's lap for cable cars or use the other seat for chairlifts).

Children younger than 3 or smaller than 1.10 m may not use the ski tows.

Please note the conditions of carriage posted at the cable cars and lifts.

STARREST.

At the Starrest restaurant, kids aged 6 and over can go on a mystery tour through the different themed areas, which are fun, exciting and informative. The ski school's "Snowstar" programme for cool kids & teens aged 6–12 is part of the Starrest entertainment. The food has been tested and chosen by kids for kids.



MURMLIREST.

The coolest kids' restaurants in the Alps! The Murmlirest invites kids under 6 to join Murmli & the Snow Ghost on a fantasy journey.



Kinderschneevalm



Legal notice & credits: Graphics/design: Serfaus-Fiss-Ladis Tourist Board. Publisher/responsible for content: Skischule Serfaus, Seilbahn Komperdell GmbH. Photos: Skischule Serfaus, Seilbahn Komperdell GmbH, www.attinaction.de. Illustrations: West Werbeagentur. Printing: Druckerei Seebacher, Hermagor. Subject to errors and alterations. This information was compiled with the greatest care but is still subject to change. The publisher shall not be held responsible for any possible changes.

Kinderschneevalm.

No one is born a master. That's why the children's ski school is adopting a new approach. Not every child warms to the principle of 'four hours of skiing'. Specially trained supervisors look after children who can't decide whether they want to play or go skiing. The relaxed method enables children to develop into little ski stars – and no arm twisting is involved. There are separate assembly points to make it easier for children to find their way around: beginner kids aged 3 or older meet at the upper entrance to the Kinderschneevalm (TEAM FIONA), while slightly advanced kids assemble at the lower part of the practice area (TEAM INGO) to form groups. Children simply take the conveyor belts to have lunch at their own special children's restaurant above the Kinderschneevalm.



Double Ski School Offer.

Our Double Ski School Offer with several staggered starting times will be expanded over the entire winter season!

The start times of individual performance groups are flexibly adapted to the respective situation and announced in good time. The group size is kept as small as possible. We will try to be as flexible as possible, especially during the busy holiday weeks, so that all of our guests can take part in the ski courses. Groups may be combined if one group is too small.

When purchasing your ticket, you can choose one of the two ski school starting times listed below. These are directly linked to the earlier or later meal and finishing times. This staggered teaching model avoids long waiting times at the cable cars, restaurants, sports shops and when skiers are allocated to groups. It also gives you more opportunities to enjoy your holiday.

We strongly recommend booking online. You can book your desired tickets from the comfort of your home and safe yourself a trip to one of our ski school offices. Online booking: www.skischule-serfaus.com

Possible times for group lessons:

Starting times:
9.30am or 10.30am
Lunch times:
11.30am to 12.30pm or 12.30pm to 1.30pm
Finishing times:
2.30pm or 3.30pm

Meeting place.

For the ride up to the ski area or the Kinderschneevalm: We ask parents to drop their children off on the Kinderschneevalm. There they will be met by the ski instructors. For all children's groups, school starts at 10.30am or 1.30pm on the Komperdell.

To pick your children up from the ski area or the Kinderschneevalm: We ask parents to pick up their kids from the Kinderschneevalm at the rose flag at the Kinderschneevalm at 3.30pm.

Children. Ski School. Prices.

Ski lesson at the Kinderschneevalm
On the Komperdell. Prices excl. Schlemmererlebnis.

Morning (2 h)	€51.00
Afternoon (2 h)	€37.00
1-day pass (4 h)	€88.00
2-day pass	€176.00
3-day pass	€224.00
4-day pass	€265.00
5-day pass	€306.00
6-day pass	€347.00
Extension pass from 4th day	€41.00
NEW! 6 half days advantage ticket	€255.00
NEW! 6 full days advantage ticket	€326.00

First day explorer ticket for beginners aged 3 – 12
Whole day €56.00
Schlemmererlebnis in Murmlirest or Starrest €19.50

Ski lesson in the Murmli Park in the village

Above the church. For beginner kids aged 3 to 4.
Morning (2 h) €51.00
Extension pass from 4th day €41.00
NEW! 6 full days advantage ticket €255.00

All lessons start on Sundays after allocation to age and performance groups!



E



KINDERSCHNEEALM.
SERFAUS. WINTER 2022/23.
WE ARE FAMILY.®

Entertainment programme.

The new audio-visual animation programme is one of a kind in the world, can be enjoyed daily on a big LED wall directly at the Kinderschneevalm at 2,000 m and is a vital instrument in ski lesson!

The stories are told to the kids during the educative entertainment programme. Every day, they are reminded of what they've learned and experienced on the slopes. Everything is tailored to kids, both theory and the repetition of various techniques – from cornering to precision stopping. The movements practised to improve ski coordination are brilliantly packaged in Murmli's exciting ski animation. This promotes concentration and memory skills. Murmli and his friends will get kids excited about this new sport in no time.



MURMLIWEG.

Murmli, our little Serfaus mascot, can be seen everywhere on the Kinderschneevalm. The secret of where Murmli lives is revealed on the interactive adventure trail. It starts near the Familienbahn Gampen chairlift. Have fun!



FRIENDS TRAILS.

LEARNING PLAYFULLY HOW TO SKI ON THE FRIENDS TRAILS.

Perfectly tailored to kids' needs, varied and guaranteed to bring lots of fun: this are the Friends Trails for kids, a unique concept that enables kids to learn to ski very quickly and easily. Fun and games are combined with the latest findings in ski technology, and kids are playfully introduced to the key movements of skiing. Parents will be amazed at how quickly their little beginners turn into experts. Spread out across a kid-friendly practice slope, three different trails focus on different skills. Once the kids have mastered all three trails, they are ready for the "proper" slopes.



SNOWBOARDING.

FOR KIDS FROM THE AGE OF 3.

Snowboarding can be learned quickly and easily at the specially conceptualized training area for snowboarders just below the Kinderschneevalm. The area features various ramps, boxes, wave slopes, obstacles and a merry-go-round.

Special riglet snowboards are available to give kids their first taste of snowboarding. Start always on Sundays. Advance booking is required if you want to start on Wednesdays.



MURMLI PARK.

VILLAGE.

The Murmli Park is located in the middle of Serfaus on a gently sloping pasture measuring 10,000m².

The park is open to everyone free of charge daily from 9am to 4pm. Two conveyor belts for children (one over 100 metres long) and all sorts of play figures ensure fun and adventure for all the family, particularly for children aged 3 to 4.

The Ski School Serfaus as developed its own teaching programme for the 3 and 4-year-old beginners. Daily entertainment programme breaks up ski lesson routine and kids get to know the stories of Murmli Friends. The programme can be booked for a morning (without Schlemmererlebnis).

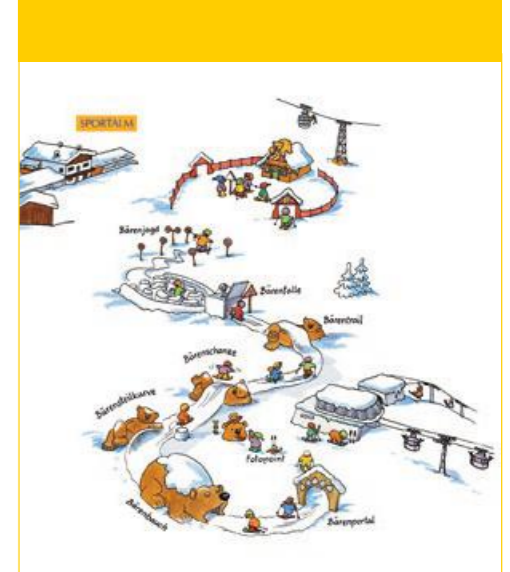
Lesson times: 10am to midday
Advanced booking is necessary (up to 1 day before the lesson starts).

Ski lessons in the Murmli Park in the village above the church, only for Mini Murmli (beginners aged 3 and 4).

Mornings 2 h €51.00

BEAR'S SLOPE.

Beechery skiing. From the Alp Kopf Bahn top station to the Kinderschneevalm.



Info box.

Opening times:
Berta's Kinderland:
daily from 10am to 3.30pm



Info direct to your mobile

For further information please contact:

Ski School Fiss-Ladis:
Tel. +43/5476/6757
Fax +43/5476/6757-40
www.skischule-fiss-ladis.at
skischule@fiss-ladis.at

Fiss Ski School Office:
daily from 8.30am to 5pm (continuous)

Ladis Ski School Office:
Sat + Sun from 8.30am to midday and 1.30pm to 5pm
Mon-Fri from 8.30am to 10.30am and 3pm to 5pm

Berta's Kindervilla:
Sun-Fri from 9.45am to 12.15pm and 1.15pm to 3.45pm

Bergbahnen Fiss-Ladis:
Tel. +43/5476/6396 . Fax +43/5476/6396-50
office@bergbahnen-fiss.at

Serfaus-Fiss-Ladis Tourist Board:
Tel. +43/5476/6239 . Fax +43/5476/6813
www.serfaus-fiss-ladis.at
info@serfaus-fiss-ladis.at
children's website www.mumli-bera.at

Safety remarks.

The safety of your children is our main concern. That's why the children at Ski School Fiss-Ladis get their own safety jackets. With these they stand out and can be seen more easily by other skiers. The safety jackets are available in all offices of the Ski School Fiss-Ladis for €4. However, for the optimum protection of children's heads, we also recommend helmets for all children. These can be hired or purchased in the local sports shops. Advance booking necessary.

Great children's entertainment.

Berta, the mascot of Ski School Fiss-Ladis, is the animation team's innovative way of making learning to ski fun. During breaks in the lessons, children sing along with Berta to popular Volker Rosin children's songs. The animation team ensures the kids have a great time for the whole week. There's a special entertainment programme for each age group.

Berta's Learning Trail.

Berta's Learning Trail has been developed for our 4-year-old kids. On perfect terrain, they go from one station to another, with special exercises to do at each. Once you've mastered the learning trail, you're ready for the big downhill to Ladis!



Legal notice & credits: Graphics/design: Serfaus-Fiss-Ladis Tourist Board . Publisher/responsible for content: Skischule Fiss-Ladis, Bergbahnen Fiss-Ladis. Photos: Skischule Fiss-Ladis, Bergbahnen Fiss-Ladis. Illustrations: West Werbeagentur. Printing: Druckerei Seebacher, Hermagor. | Subject to errors and alterations. This information was compiled with the greatest care but is still subject to change. The publisher shall not be held responsible for any possible changes.



BURTON RIGLET PARK.

Snowboarding for kids from the age of four! Burton Riglet has been designed to give kids aged from four to seven their first taste of snowboarding. A riglet is a cable fixed to the snowboard which allows instructors to steer and control the board. Riglet parks already exist all over the world – in Europe, Serfaus-Fiss-Ladis is once again the trail blazer. Cool minis are ready to shred. Lessons always start on Mondays after reservation .

BOARDER CLUB.

Smooth turns, daring jumps and tricks on the snowboard. We have a separate club for this. The Boarder Club. The training ground for future pros is located right next to the bottom station of the Möseralmabfahrt and offers practice lifts and a conveyor belt, obstacles, mogul slopes and special trails. Check it out!

SNOW-V – 1,2,3 PIZZA.

World first. The children's ski school in Fiss-Ladis is known for its innovative strengths. Now the first SNOW-V has been developed, tested and presented to the public in Fiss. It teaches children, teenagers and even adults the proper sequence of movements for the Pizza (the snow plough), in a jiffy. Faster and easier learning – that's the aim of the innovators in Fiss-Ladis. And it's something which both young and old can benefit from.



BERTA'S KINDERVILLA.

Highly recommended ski lessons and great entertainment for the kids – the Ski School Fiss-Ladis has set new standards with the construction of a three-storey building in the heart of Berta's Kinderland. The centrepiece is a large playroom in which a variety of events take place. In Berta's

Snow Adventure Room children from the age of 3 enjoy perfect care and a wide range of entertainment. The building also houses a shop, an office, a modern outdoor stage, family toilets, changing rooms and lots more.

CAVE WORLD.

The cool experience trail for children aged 6 and over, transports children into the world of the Fiss Mossman, his friend Urges and the big rock monster. The Cave World is located where the Möseralmabfahrt slope meets the Langwiesabfahrt slope. Fun and action are guaranteed!

INDIAN VILLAGE.

Right next to the blue Ladisabfahrt slope in Fiss there's a wonderful Red Indian and Wild West attraction based on Cowboy Joe. The village has a saloon, hotel, sheriff, Indian teepees, a canoe and lots more. Berta's Indian Village offers plenty of fun and games for the little ones and is ideal for a short break from the long Ladisabfahrt slope. A worthwhile destination for all ski Indians.



FAIRY TALE EXPRESS.

Unique in the world: A covered double conveyor belt of Sunkid, connecting Berta's Kinderland with the Sonnenbahn mid station, has more than twice the capacity of a single conveyor belt. Two conveyor belts in one tunnel and a very special highlight in Berta's Kinderland – the 'Märchenexpress' (Fairy Tale Express). During the exciting ride, kids and also their parents can guess which fairytales are displayed in the tunnel. Life-size fairytale figures, over a length of three times 10 meters, turn the ride on the conveyor belt into a true adventure.



Berta's Kindergarten.

For children from 3 months without skis in Fiss. In our spacious kindergarten (with climbing tower, sleeping corner, children's cinema and so on) in Fiss your 'little ones' will be given loving care and attention. In fine weather they can, of course, play in the snow in Berta's Miniland. Our friendly and experienced kindergarten teachers are look forward to looking after your children. Advance booking necessary.

Full day	€66.00
Half day	€43.00
Midday care	€19.50
One hour taster lesson Sunday or Monday	€19.00
Buggy hire/per day	€19.00

Berta's Snow Adventure.

For children aged 3 to 4
Monday to Friday from 1.30pm until 3.30pm

At Berta's Kinderland we offer a great outdoor programme where the kids can enjoy the snow without skis. We recommend warm winter clothes including gloves and hats. Don't forget the sun screen! Please make an advance reservation. Can be combined with Bambini ski lesson!

Monday to Friday	half-day	€43.00
------------------	----------	--------

BERTA'S KINDERPLANET.

Our popular children's restaurant has an ultra modern Free-Flow-4-Kids system. Apart from varied and child-friendly menus, we also offer menus for children with food allergies.

For the kids to relax and play, there's a children's cinema, PlayStation, as well as the chance to paint ...



Children. Ski school. Prices.

	4 hours without midday care	all-day programme including midday care and lunch
6 days	€342.00	€459.00
5 days	€304.00	€401.50
4 days	€266.00	€344.00
3 days	€228.00	€286.50
2 days	€176.00	€215.00
1 day	€88.00	€107.50

Children's lunchtime supervision (lunch, drink and supervision) €19.50
Explorer ticket for child beginners up to the age of 6 in Berta's Kinderland – only Sundays or Mondays €59.00

Bambinis. 3-year-olds.

'My first ski lesson' – a programme specially developed for 3-year-olds provides an introduction to the wonderful world of skiing. In a blend of skiing and playing they gain a first impression of the strange surroundings and what an odd substance snow is. The aim is to learn how to do the snow plough. Not all children are as strong or coordinated as others and able to concentrate for so long, so it doesn't really matter if they don't all fulfil their goal, the main thing is that they have fun in the snow. The gentle start for children from the age of 3. Half-day lesson – every morning! Perfect care in small groups with no more than 5 children.

Per day	€59.00
Children's lunchtime supervision (lunch, drink, supervision)	€19.50

Payment for full-day care until 3.30pm (non skiers/per day) €27.00
Ski storage: €3/day.

Book and Buy Online.

Use our time-saving online ticket service. Book and pay for your ski lessons online at www.skischule-fiss-ladis.at

Children. Ski passes.

Every child must have a ski pass to be allowed to ski. Mumli/Berta Card*: This free ski pass is available for all children born in or after 2017 and can be obtained at a cable car ticket office. Child fares*: Children born between 2016 and 2008 are eligible for the reduced child fare. Beginner ski pass: Valid only on the Sonnenbahn Fiss-Ladis cable car, practice lifts in the local area and in Berta's Kinderland. Available for a maximum of 3 days. (For more information contact the cable car ticket office or the ski school). * Photo ID must be presented.



BERTA'S KINDERLAND. FISS. LADIS. WINTER 2022/23. WE ARE FAMILY.®

SERFAUS-FISS-LADIS.AT

